

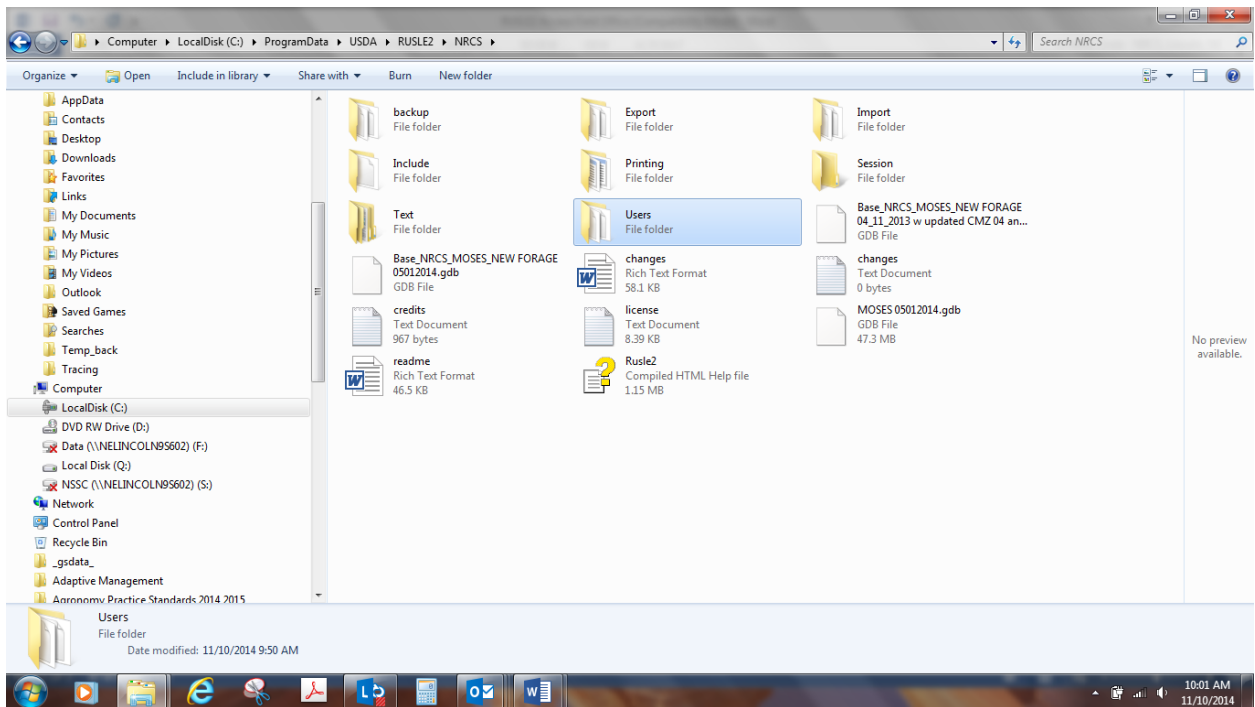
## RUSLE2 Program File

### Instructions for downloading and installing RUSLE2

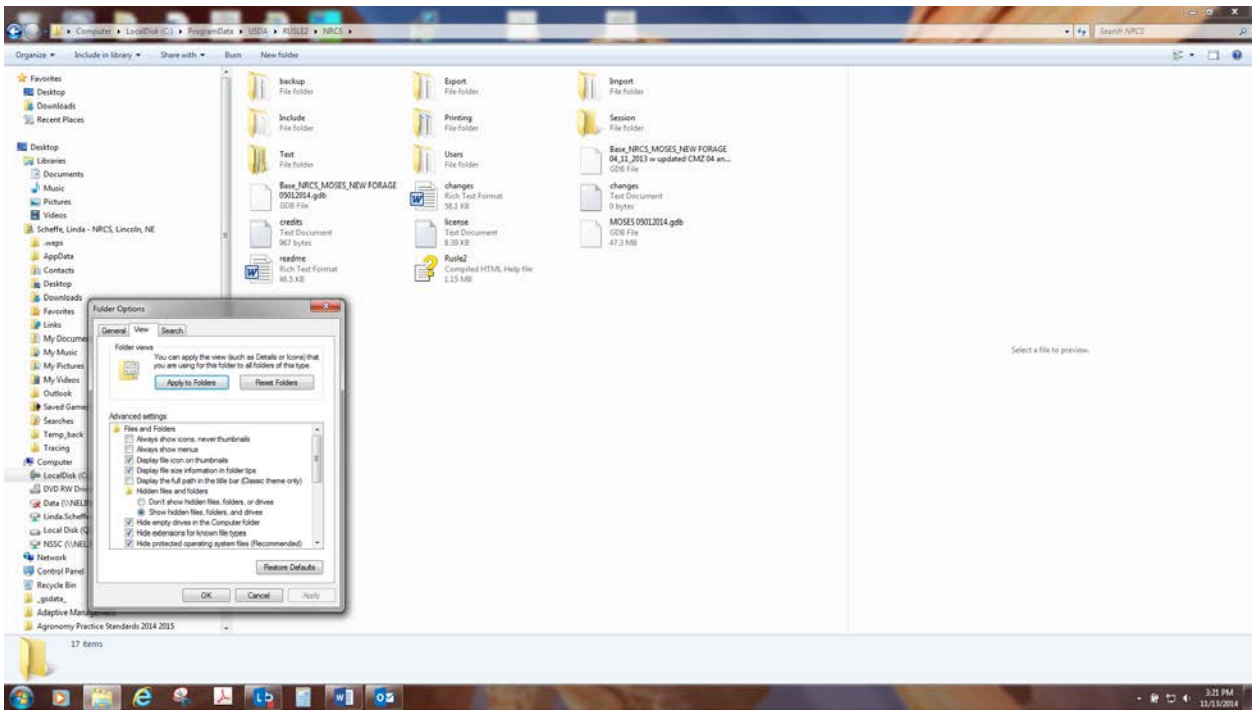
NOTE: For a standard installation on NRCS CCE-compatible machines, select all defaults during installation.

Two files are available on this site for downloading RUSLE2 – a zipped (.zip) file and an executable (.exe) file. **Click** the file that works best for you.

New version will be loaded at C: Program Files (x86) in a RUSLE2 folder. The database will be loaded at C: ProgramData/USDA/RUSLE2/NRCS. Open the folder to get the list of files below



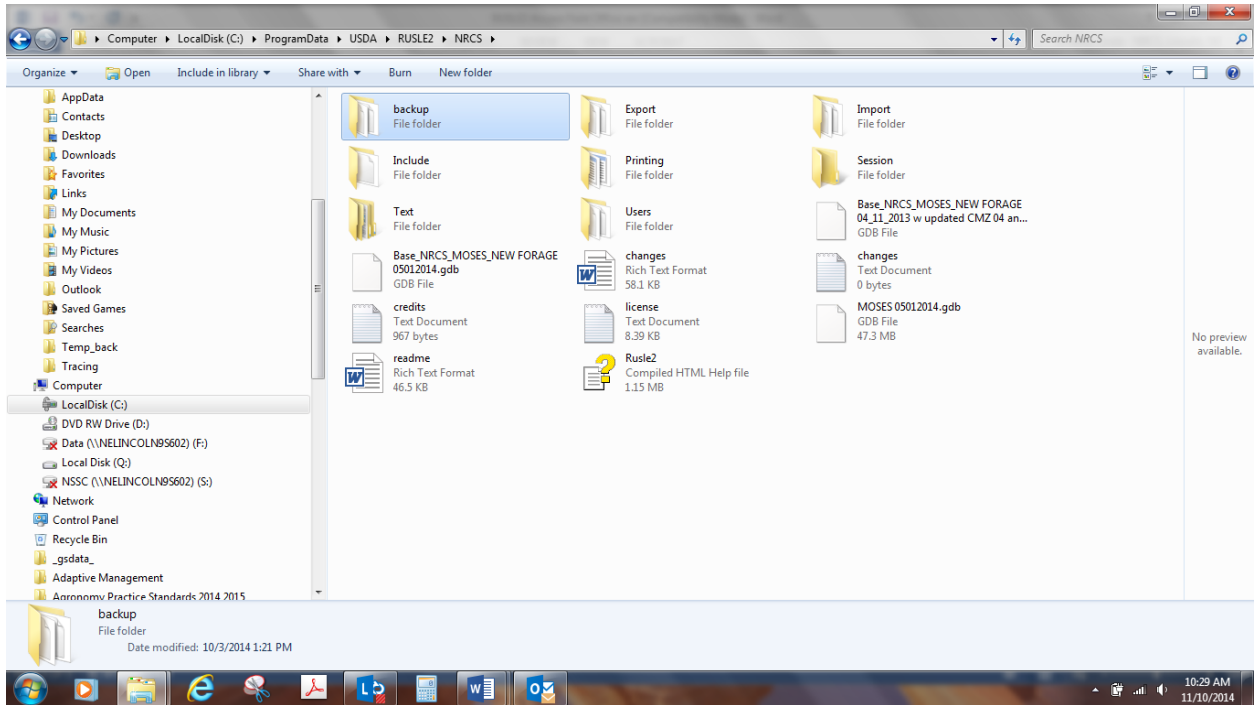
If you can't see the folder, go to Organize, folder and search options, View, and click on Show hidden folders, and drives.



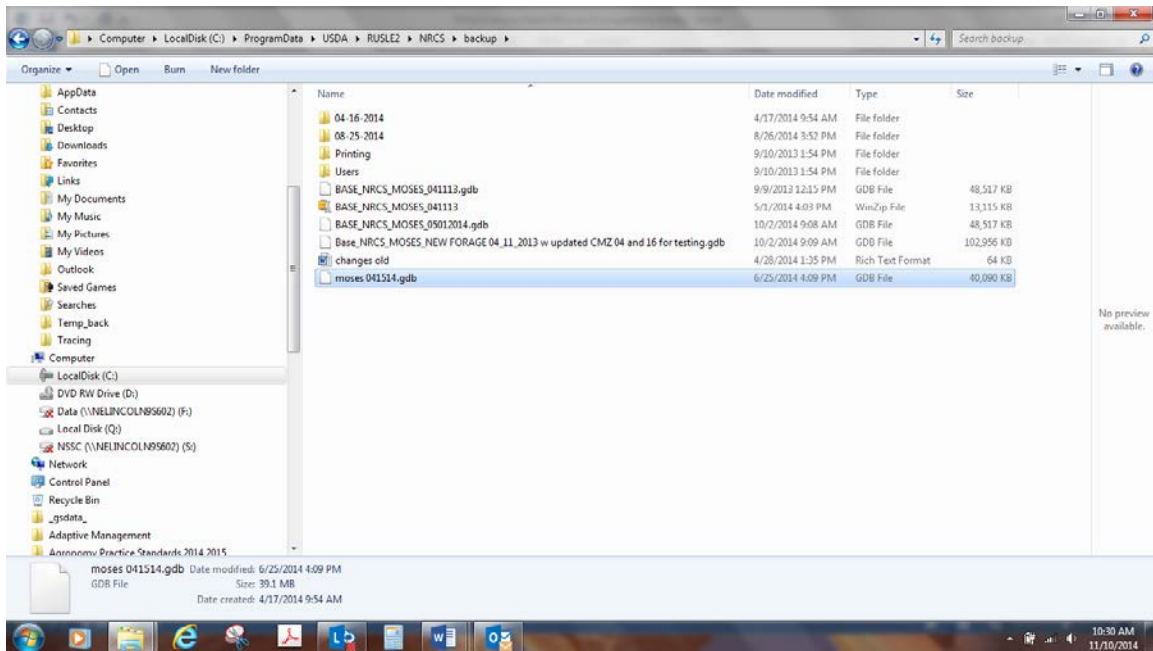
## Getting Your Databases Running:

### a. If you have been working on a moses database on your own computer:

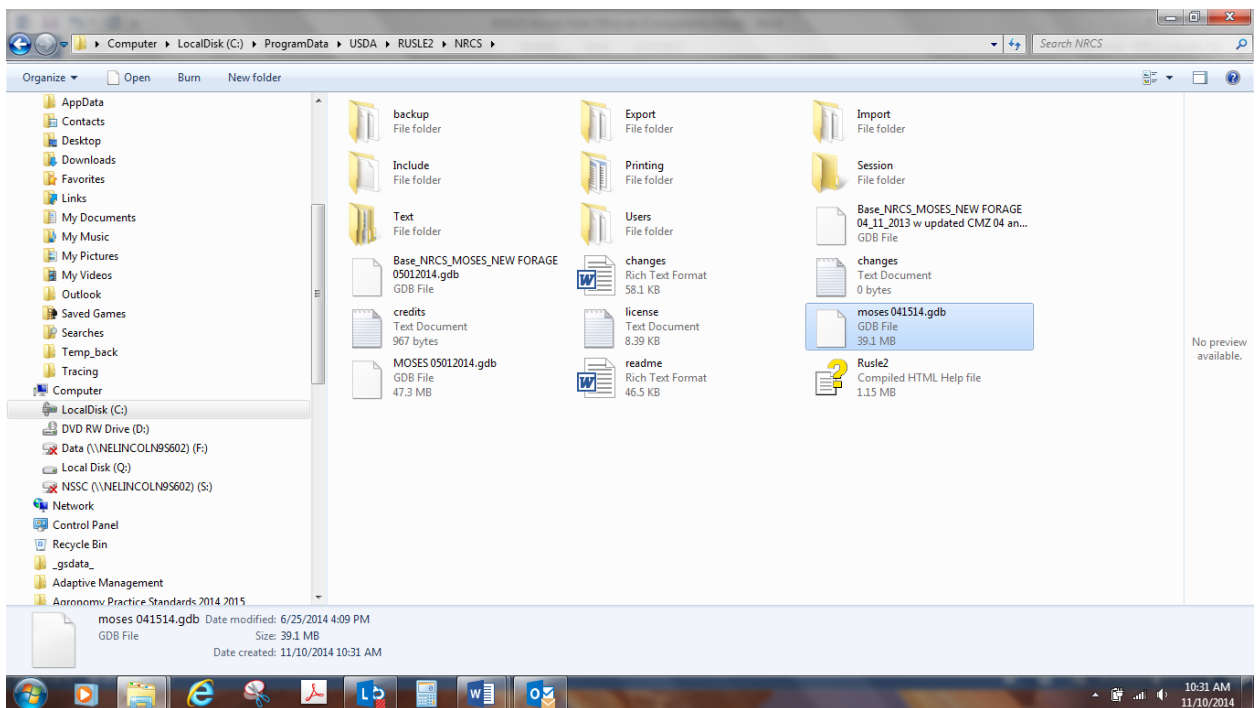
The moses database that you have been working on will automatically be backed up to the backup folder in the new version:



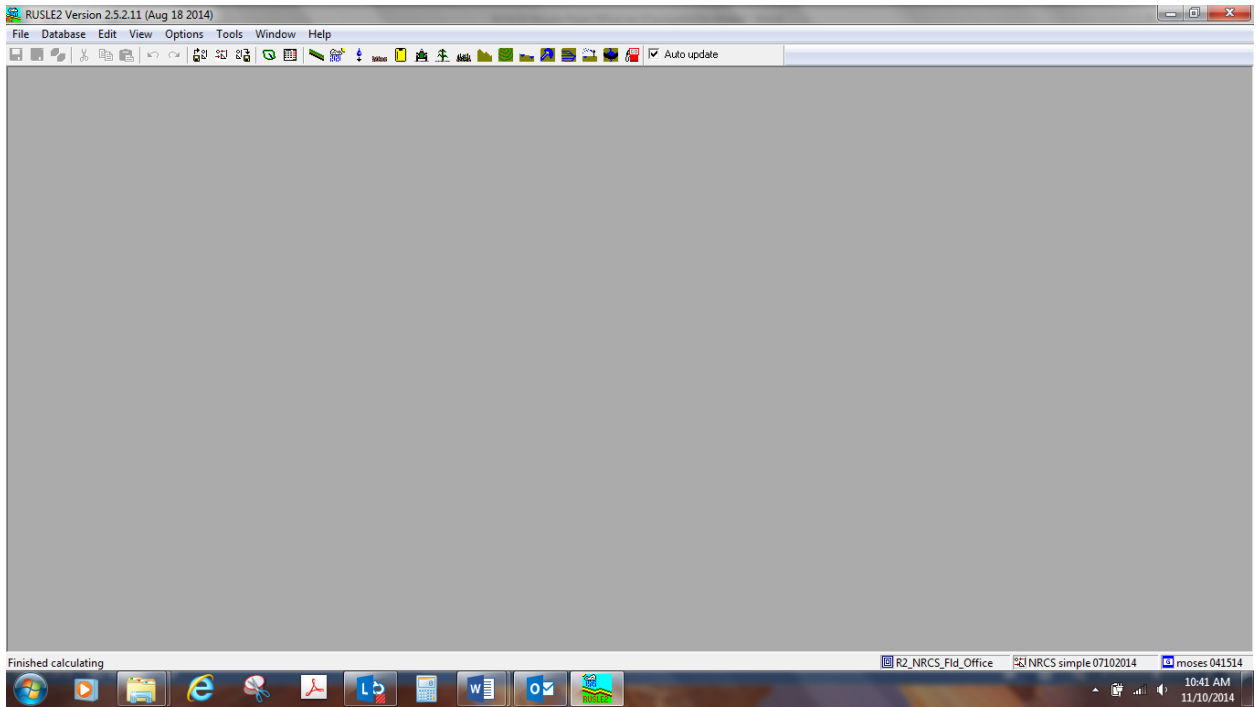
After installation, go to backup folder, find your working moses database, right click and copy



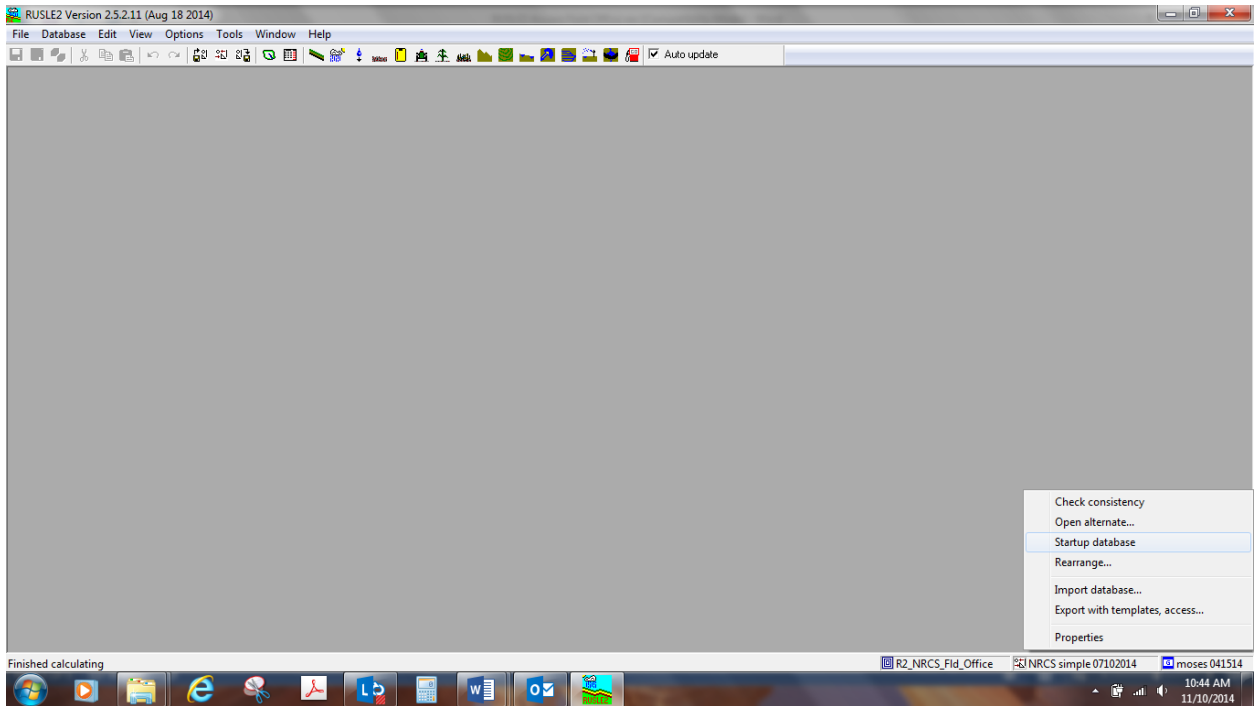
Go to your root folder where your databases are and right click, paste.



Open RUSLE2 and right click, open alternate and select your working moses database



Right click, select startup database:



**b. If you have been working on a moles database on a shared drive:**

You will need to go to RUSLE2, right click on lower right corner, open alternate and browse to the moles database on the share drive. Then, right click and select startup database.